

"Tom", "Dick", "Harry"
 Midrange- and Tweeter Amp
 Main Circuit
 Rev 4.4 2004-10-27
 ©Christian Rintelen

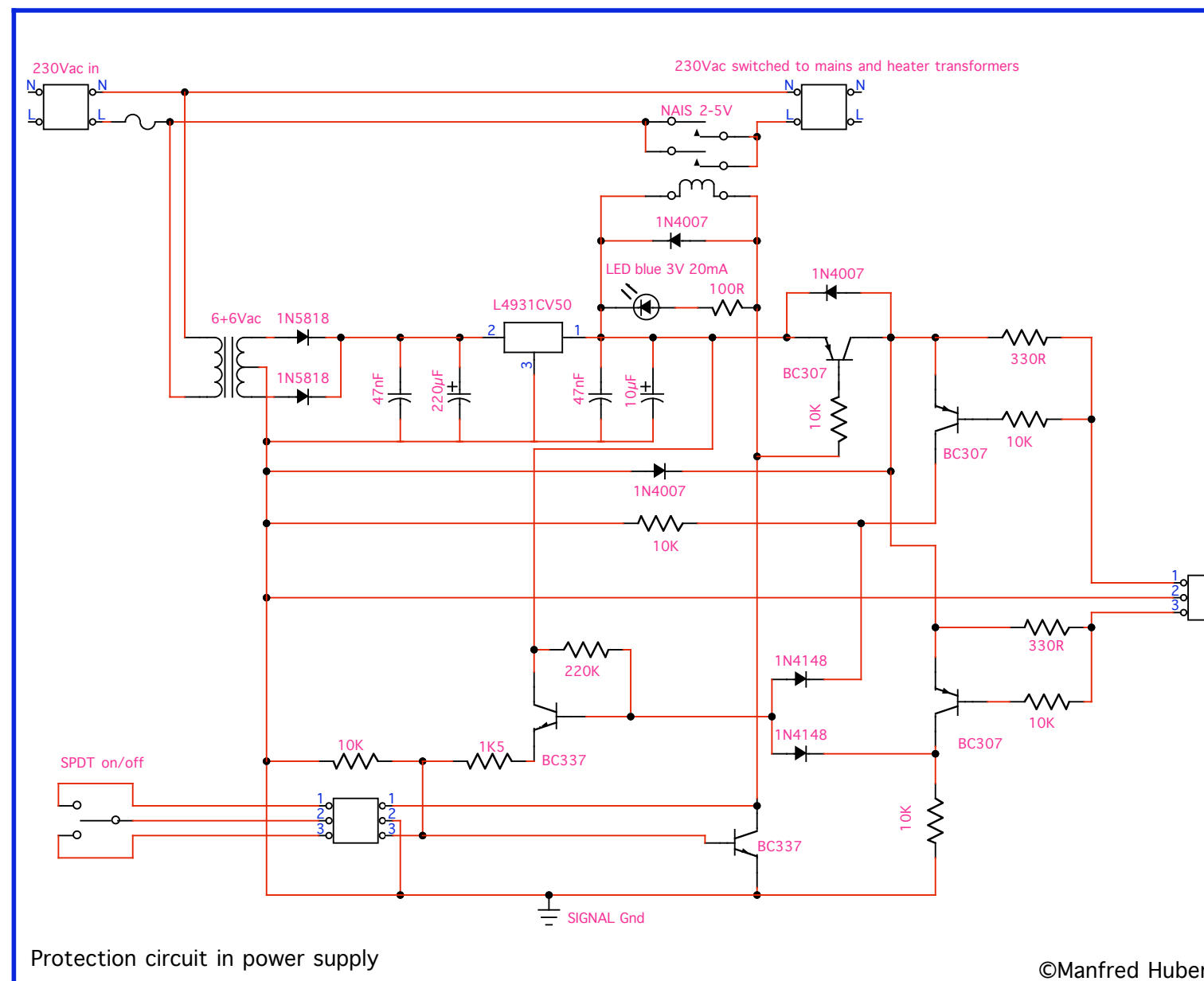
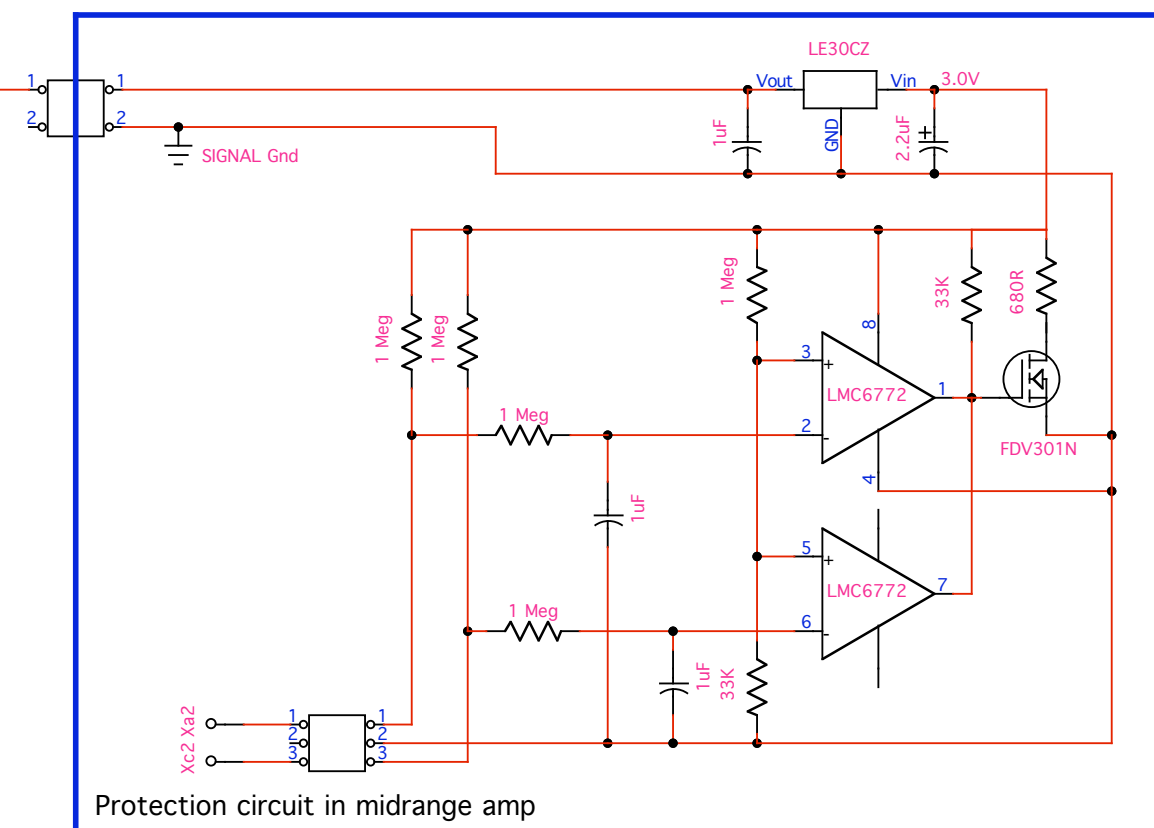
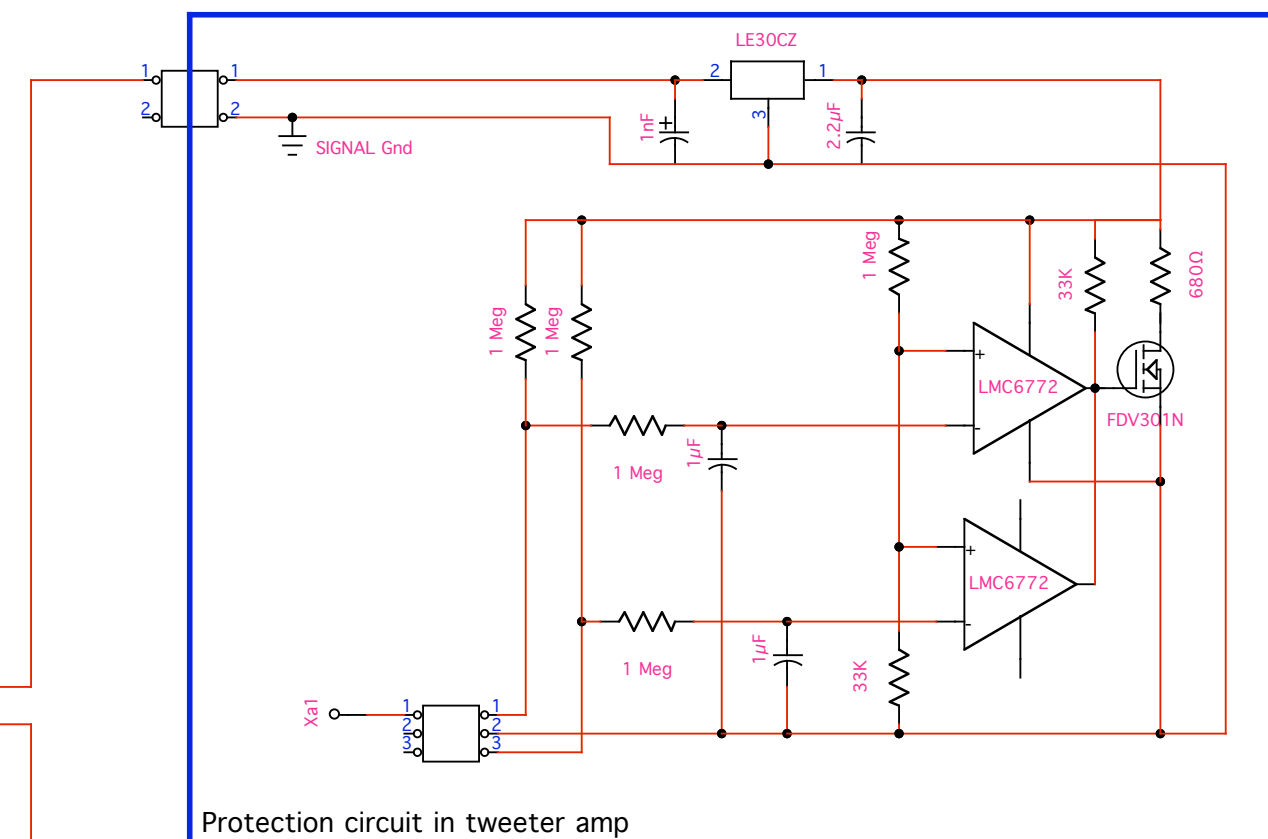


Plate current protection circuit
(mains voltage is switched off if voltage between Xa/Xc and SIGNAL Gnd $\geq 100\text{mV}$)



"Tom", "Dick", "Harry"
Midrange-/Tweeter Amp
Protection circuit
Rev 1.2 2004-10-07
©Christian Rintelen